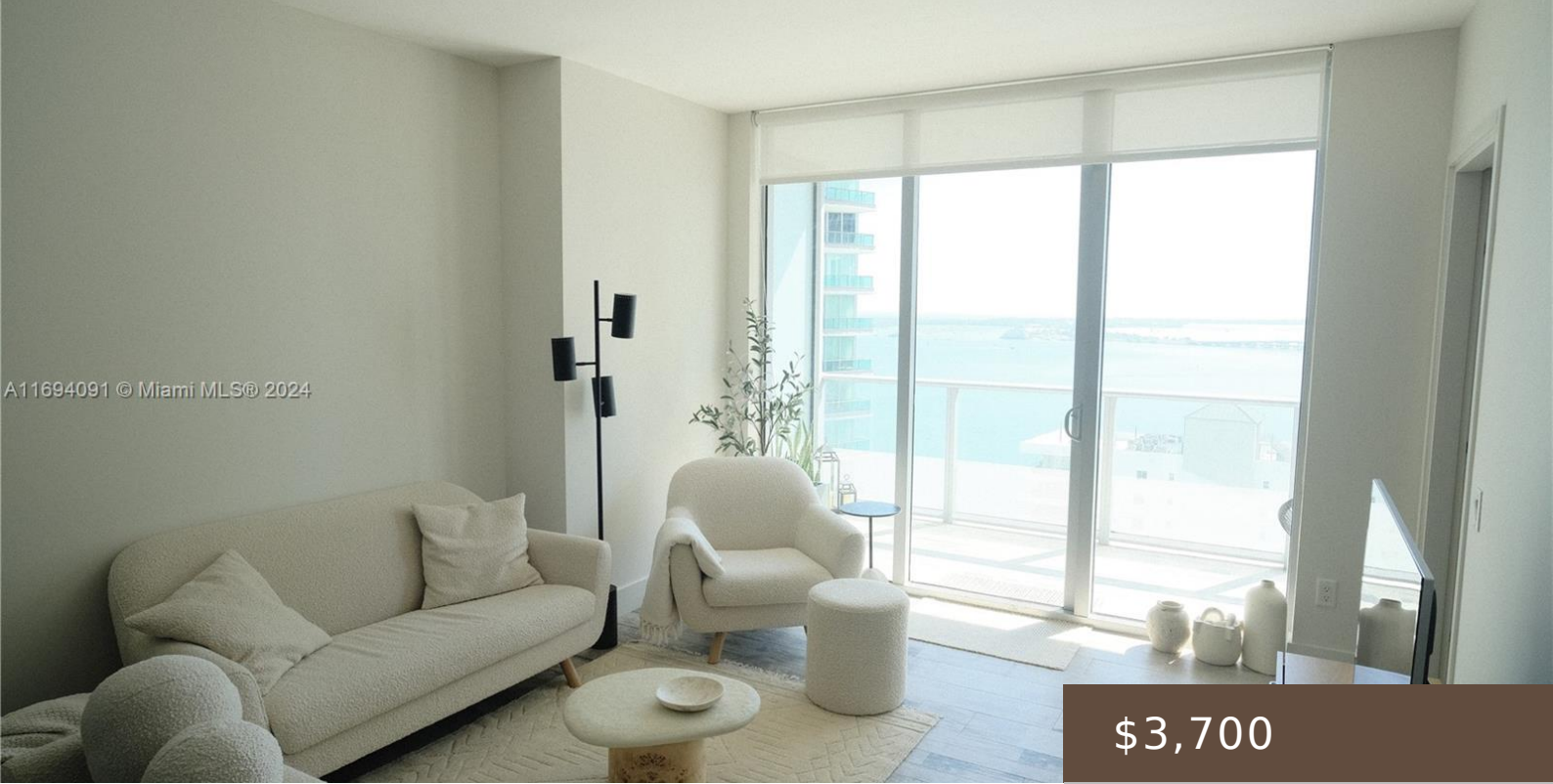


A11694091 © Miami MLS® 2024



\$3,700

1300 BRICKELL BAY DR 2107

<https://brickellhouseapartments.com>

BRICKELLHOUSE CONDO UNIT 2107 UNDIV 0.192874% INT IN COMMON ELEMENTS OFF REC 28283-3663 BRICKELL HOUSE combines it all, location, design and modern lifestyle, great finishes: Italian porcelain floors, simil wood, new lightning fixtures, roller shades, california closets (2), table (island) in kitchen is included, new AC, washer and dryer. Enjoy amazing Water Views from this [...]

- 1 bed
- 2 baths
- Condominium
- ResidentialLease
- Active
- 696 sq ft

Basics



Category: ResidentialLease

Status: Active

Bathrooms: 2 baths

Floors: 1 floor

Lot size: 1, 1 sq ft

View: Bay,Water

County: Miami-Dade

Type: Condominium

Bedrooms: 1 bed

Half baths: 1 half bath

Area: 696 sq ft

Year built: 2014

Subdivision Name: BRICKELLHOUSE CONDO

Lease Term: TwelveMonths

Building Details

Water Source: Public

Construction Materials: Block

Garage Spaces: 1

Floor covering: Tile

Architectural Style: HighRise

Covered Spaces: 1

Levels: One

Amenities & Features

Pool Features:

AboveGround,Pool,Community

Security Features: KeyCardEntry,SmokeDetectors

Patio & Porch Features:

Balcony,Open

Association Amenities: Elevators,Management,Pool

Utilities: CableAvailable

Window Features: Blinds

Cooling: CentralAir

Exterior Features: Balcony

Furnished: Unfurnished

Heating: Electric

Interior Features:

FirstFloorEntry

Appliances:

Dryer,Dishwasher,ElectricRange,Refrigerator,TrashCompactor,Washer

Miscellaneous

List Office Name: TS International Realty

Rent Includes: AssociationDues

