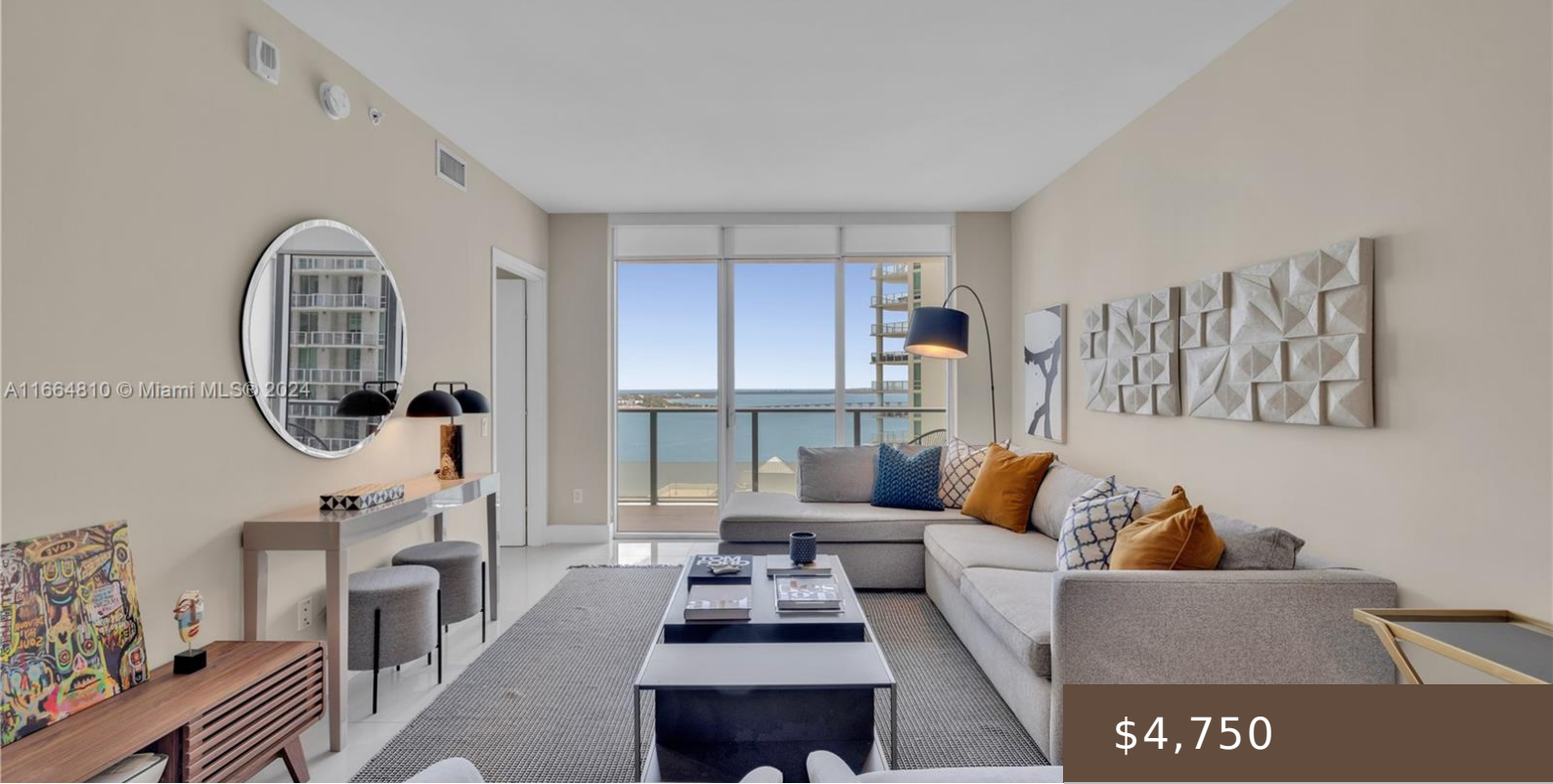


A11664810 © Miami MLS © 2024



\$4,750

## 1300 BRICKELL BAY DR 2208

<https://brickellhouseapartments.com>

BRICKELLHOUSE CONDO UNIT 2208 UNDIV 0.194259% INT IN COMMON ELEMENTS OFF REC 28283-3663 Beautifully remodelled 1 bed 1 bath with breathtaking water Views. Turn-Key unit finished impeccably with designer furniture. Enjoy new porcelain floors, floor to ceiling windows and resort style living with 24/7 concierge, valet services, 2 pools including an expansive 46th floor sky [...]

- 1 bed
- 2 baths
- Condominium
- ResidentialLease
- Active
- 701 sq ft

### Basics



**Category:** ResidentialLease

**Status:** Active

**Bathrooms:** 2 baths

**Area:** 701 sq ft

**Year built:** 2014

**County:** Miami-Dade

**Type:** Condominium

**Bedrooms:** 1 bed

**Half baths:** 1 half bath

**Lot size:** 1, 1 sq ft

**Subdivision Name:** BRICKELLHOUSE CONDO

**Lease Term:** TwelveMonths

---

## Building Details

**Covered Spaces:** 1

**Garage Spaces:** 1

---

## Amenities & Features

**Pool Features:**

AboveGround,Pool,Community

**Parking Features:** OneSpace

**Security Features:**

KeyCardEntry,LobbySecured

**Association Amenities:**

FitnessCenter,Management,Other,Pool,Sauna,SpaHotTub

**Utilities:** CableAvailable

**Furnished:** Furnished

---

## Miscellaneous

**List Office Name:** Coldwell Banker Realty

**Rent Includes:** Internet,CableTv

